

Tuba

Paulding County Bands Daily Drill

1 F Descending



2 Bb Ascending

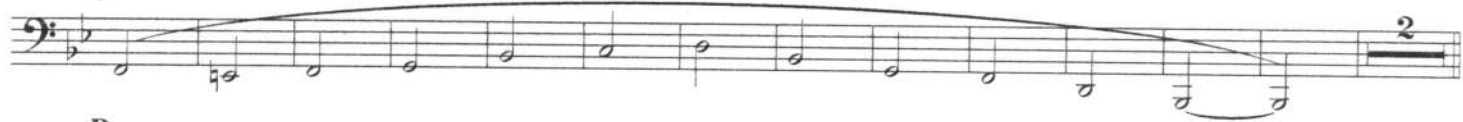


3 Warm up and Maintaining A

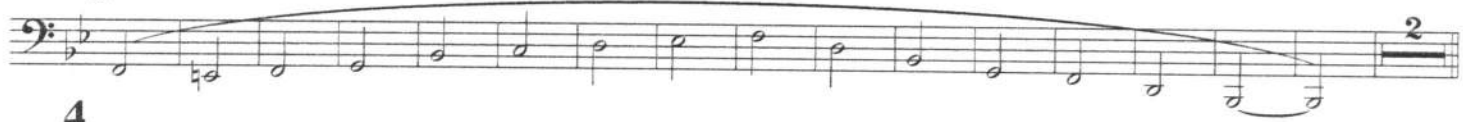
B



C



D



4



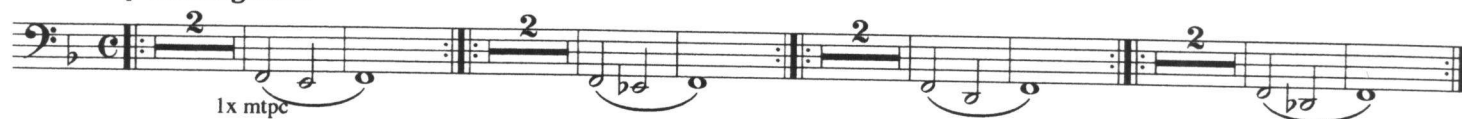
5 Whole notes



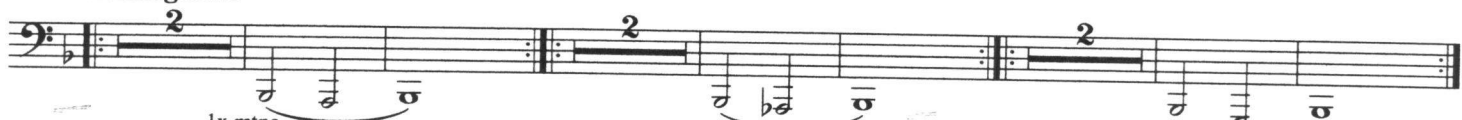
6 Articulation



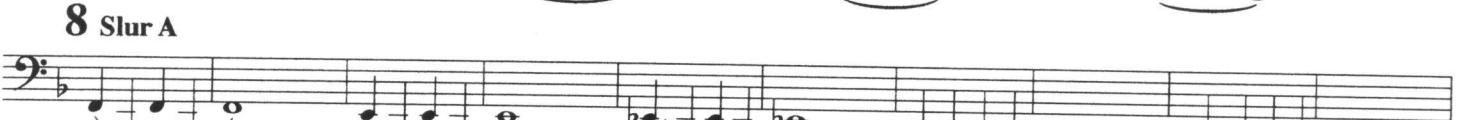
7 Remington A



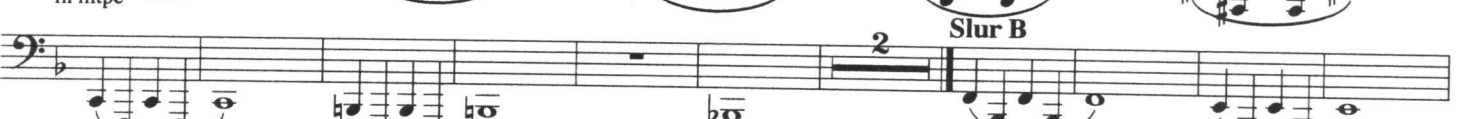
Remington B



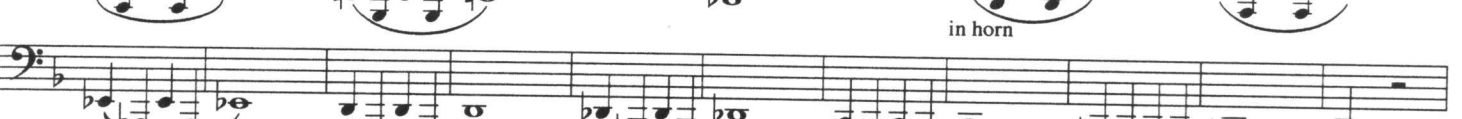
Remington C



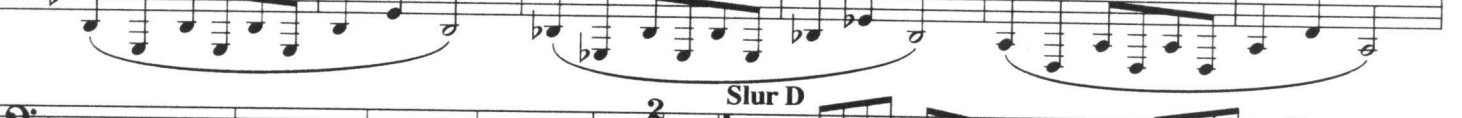
8 Slur A



Slur B



Slur C



Slur D



9 Concert Bb

Tuba 3



Scale Pattern A



Scale Pattern B



Scale Pattern C



Scale in 3rds



Intervals



Arpeggio



Concert Ab



Scale Pattern A



Scale Pattern B



Scale Pattern C



Scale in 3rds



Intervals



Arpeggio



Concert F

Tuba 4



Scale Pattern A



Scale Pattern B



Scale Pattern C



Scale in 3rds

Intervals



Arpeggio



Concert Eb



Scale Pattern A



Scale Pattern B

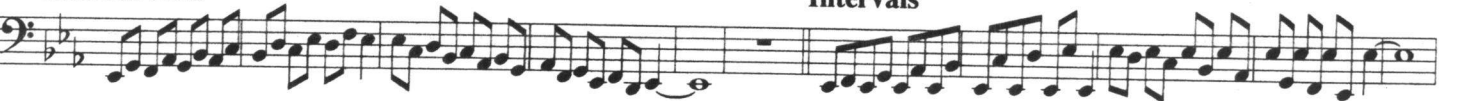


Scale Pattern C



Scale in 3rds

Intervals



Arpeggio



Concert Db

Tuba 5



Scale Pattern A



Scale Pattern B



Scale Pattern C



Scale in 3rds



Intervals



Arpeggio



Concert C



Scale Pattern A



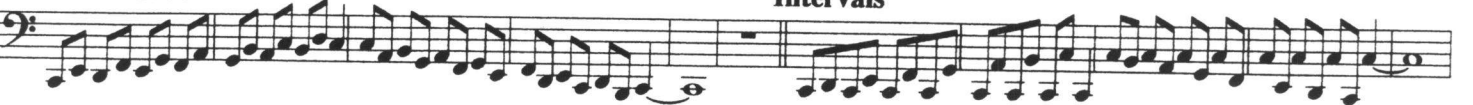
Scale Pattern B



Scale Pattern C



Scale in 3rds



Intervals



Arpeggio



Concert G

Tuba 6



Scale Pattern A



Scale Pattern B



Scale Pattern C



Scale in 3rds

Intervals



Arpeggio



Concert D



Scale Pattern A



Scale Pattern B

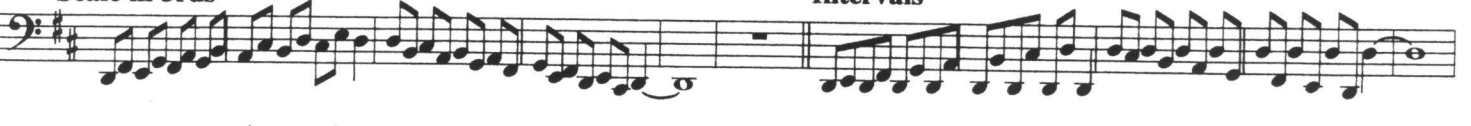


Scale Pattern C



Scale in 3rds

Intervals



Arpeggio



Tuba 7

The bass line of 'The Rose Tree' is written on a single staff in bass clef with a key signature of one sharp (F#). The melody consists of eighth and quarter notes, ending with a whole rest in the final measure.

The bass line of 'The Rose Tree' is written on a single staff with a bass clef and a key signature of one sharp (F#). The melody consists of a series of eighth and sixteenth notes, with a final measure containing a whole note. The notes are: G2, A2, B2, C3, D3, E3, F#3, G3, A3, B3, C4, D4, E4, F#4, G4, A4, B4, C5, D5, E5, F#5, G5, A5, B5, C6, D6, E6, F#6, G6, A6, B6, C7, D7, E7, F#7, G7, A7, B7, C8, D8, E8, F#8, G8, A8, B8, C9, D9, E9, F#9, G9, A9, B9, C10, D10, E10, F#10, G10, A10, B10, C11, D11, E11, F#11, G11, A11, B11, C12, D12, E12, F#12, G12, A12, B12, C13, D13, E13, F#13, G13, A13, B13, C14, D14, E14, F#14, G14, A14, B14, C15, D15, E15, F#15, G15, A15, B15, C16, D16, E16, F#16, G16, A16, B16, C17, D17, E17, F#17, G17, A17, B17, C18, D18, E18, F#18, G18, A18, B18, C19, D19, E19, F#19, G19, A19, B19, C20, D20, E20, F#20, G20, A20, B20, C21, D21, E21, F#21, G21, A21, B21, C22, D22, E22, F#22, G22, A22, B22, C23, D23, E23, F#23, G23, A23, B23, C24, D24, E24, F#24, G24, A24, B24, C25, D25, E25, F#25, G25, A25, B25, C26, D26, E26, F#26, G26, A26, B26, C27, D27, E27, F#27, G27, A27, B27, C28, D28, E28, F#28, G28, A28, B28, C29, D29, E29, F#29, G29, A29, B29, C30, D30, E30, F#30, G30, A30, B30, C31, D31, E31, F#31, G31, A31, B31, C32, D32, E32, F#32, G32, A32, B32, C33, D33, E33, F#33, G33, A33, B33, C34, D34, E34, F#34, G34, A34, B34, C35, D35, E35, F#35, G35, A35, B35, C36, D36, E36, F#36, G36, A36, B36, C37, D37, E37, F#37, G37, A37, B37, C38, D38, E38, F#38, G38, A38, B38, C39, D39, E39, F#39, G39, A39, B39, C40, D40, E40, F#40, G40, A40, B40, C41, D41, E41, F#41, G41, A41, B41, C42, D42, E42, F#42, G42, A42, B42, C43, D43, E43, F#43, G43, A43, B43, C44, D44, E44, F#44, G44, A44, B44, C45, D45, E45, F#45, G45, A45, B45, C46, D46, E46, F#46, G46, A46, B46, C47, D47, E47, F#47, G47, A47, B47, C48, D48, E48, F#48, G48, A48, B48, C49, D49, E49, F#49, G49, A49, B49, C50, D50, E50, F#50, G50, A50, B50, C51, D51, E51, F#51, G51, A51, B51, C52, D52, E52, F#52, G52, A52, B52, C53, D53, E53, F#53, G53, A53, B53, C54, D54, E54, F#54, G54, A54, B54, C55, D55, E55, F#55, G55, A55, B55, C56, D56, E56, F#56, G56, A56, B56, C57, D57, E57, F#57, G57, A57, B57, C58, D58, E58, F#58, G58, A58, B58, C59, D59, E59, F#59, G59, A59, B59, C60, D60, E60, F#60, G60, A60, B60, C61, D61, E61, F#61, G61, A61, B61, C62, D62, E62, F#62, G62, A62, B62, C63, D63, E63, F#63, G63, A63, B63, C64, D64, E64, F#64, G64, A64, B64, C65, D65, E65, F#65, G65, A65, B65, C66, D66, E66, F#66, G66, A66, B66, C67, D67, E67, F#67, G67, A67, B67, C68, D68, E68, F#68, G68, A68, B68, C69, D69, E69, F#69, G69, A69, B69, C70, D70, E70, F#70, G70, A70, B70, C71, D71, E71, F#71, G71, A71, B71, C72, D72, E72, F#72, G72, A72, B72, C73, D73, E73, F#73, G73, A73, B73, C74, D74, E74, F#74, G74, A74, B74, C75, D75, E75, F#75, G75, A75, B75, C76, D76, E76, F#76, G76, A76, B76, C77, D77, E77, F#77, G77, A77, B77, C78, D78, E78, F#78, G78, A78, B78, C79, D79, E79, F#79, G79, A79, B79, C80, D80, E80, F#80, G80, A80, B80, C81, D81, E81, F#81, G81, A81, B81, C82, D82, E82, F#82, G82, A82, B82, C83, D83, E83, F#83, G83, A83, B83, C84, D84, E84, F#84, G84, A84, B84, C85, D85, E85, F#85, G85, A85, B85, C86, D86, E86, F#86, G86, A86, B86, C87, D87, E87, F#87, G87, A87, B87, C88, D88, E88, F#88, G88, A88, B88, C89, D89, E89, F#89, G89, A89, B89, C90, D90, E90, F#90, G90, A90, B90, C91, D91, E91, F#91, G91, A91, B91, C92, D92, E92, F#92, G92, A92, B92, C93, D93, E93, F#93, G93, A93, B93, C94, D94, E94, F#94, G94, A94, B94, C95, D95, E95, F#95, G95, A95, B95, C96, D96, E96, F#96, G96, A96, B96, C97, D97, E97, F#97, G97, A97, B97, C98, D98, E98, F#98, G98, A98, B98, C99, D99, E99, F#99, G99, A99, B99, C100, D100, E100, F#100, G100, A100, B100, C101, D101, E101, F#101, G101, A101, B101, C102, D102, E102, F#102, G102, A102, B102, C103, D103, E103, F#103, G103, A103, B103, C104, D104, E104, F#104, G104, A104, B104, C105, D105, E105, F#105, G105, A105, B105, C106, D106, E106, F#106, G106, A106, B106, C107, D107, E107, F#107, G107, A107, B107, C108, D108, E108, F#108, G108, A108, B108, C109, D109, E109, F#109, G109, A109, B109, C110, D110, E110, F#110, G110, A110, B110, C111, D111, E111, F#111, G111, A111, B111, C112, D112, E112, F#112, G112, A112, B112, C113, D113, E113, F#113, G113, A113, B113, C114, D114, E114, F#114, G114, A114, B114, C115, D115, E115, F#115, G115, A115, B115, C116, D116, E116, F#116, G116, A116, B116, C117, D117, E117, F#117, G117, A117, B117, C118, D118, E118, F#118, G118, A118, B118, C119, D119, E119, F#119, G119, A119, B119, C120, D120, E120, F#120, G120, A120, B120, C121, D121, E121, F#121, G121, A121, B121, C122, D122, E122, F#122, G122, A122, B122, C123, D123, E123, F#123, G123, A123, B123, C124, D124, E124, F#124, G124, A124, B124, C125, D125, E125, F#125, G125, A125, B125, C126, D126, E126, F#126, G126, A126, B126, C127, D127, E127, F#127, G127, A127, B127, C128, D128, E128, F#128, G128, A128, B128, C129, D129, E129, F#129, G129, A129, B129, C130, D130, E130, F#130, G130, A130, B130, C131, D131, E131, F#131, G131, A131, B131, C132, D132, E132, F#132, G132, A132, B132, C133, D133, E133, F#133, G133, A133, B133, C134, D134, E134, F#134, G

The bass line of 'The Rose Tree' is written on a single staff in bass clef. It begins with a key signature of one sharp (F#) and a common time signature (C). The melody consists of a series of eighth notes, mostly beamed in pairs, with a final measure in 2/4 time. The notes are: G2, A2, B2, C3, D3, E3, F#3, G3, A3, B3, C4, D4, E4, F#4, G4, A4, B4, C5, D5, E5, F#5, G5, A5, B5, C6, D6, E6, F#6, G6, A6, B6, C7, D7, E7, F#7, G7, A7, B7, C8, D8, E8, F#8, G8, A8, B8, C9, D9, E9, F#9, G9, A9, B9, C10, D10, E10, F#10, G10, A10, B10, C11, D11, E11, F#11, G11, A11, B11, C12, D12, E12, F#12, G12, A12, B12, C13, D13, E13, F#13, G13, A13, B13, C14, D14, E14, F#14, G14, A14, B14, C15, D15, E15, F#15, G15, A15, B15, C16, D16, E16, F#16, G16, A16, B16, C17, D17, E17, F#17, G17, A17, B17, C18, D18, E18, F#18, G18, A18, B18, C19, D19, E19, F#19, G19, A19, B19, C20, D20, E20, F#20, G20, A20, B20, C21, D21, E21, F#21, G21, A21, B21, C22, D22, E22, F#22, G22, A22, B22, C23, D23, E23, F#23, G23, A23, B23, C24, D24, E24, F#24, G24, A24, B24, C25, D25, E25, F#25, G25, A25, B25, C26, D26, E26, F#26, G26, A26, B26, C27, D27, E27, F#27, G27, A27, B27, C28, D28, E28, F#28, G28, A28, B28, C29, D29, E29, F#29, G29, A29, B29, C30, D30, E30, F#30, G30, A30, B30, C31, D31, E31, F#31, G31, A31, B31, C32, D32, E32, F#32, G32, A32, B32, C33, D33, E33, F#33, G33, A33, B33, C34, D34, E34, F#34, G34, A34, B34, C35, D35, E35, F#35, G35, A35, B35, C36, D36, E36, F#36, G36, A36, B36, C37, D37, E37, F#37, G37, A37, B37, C38, D38, E38, F#38, G38, A38, B38, C39, D39, E39, F#39, G39, A39, B39, C40, D40, E40, F#40, G40, A40, B40, C41, D41, E41, F#41, G41, A41, B41, C42, D42, E42, F#42, G42, A42, B42, C43, D43, E43, F#43, G43, A43, B43, C44, D44, E44, F#44, G44, A44, B44, C45, D45, E45, F#45, G45, A45, B45, C46, D46, E46, F#46, G46, A46, B46, C47, D47, E47, F#47, G47, A47, B47, C48, D48, E48, F#48, G48, A48, B48, C49, D49, E49, F#49, G49, A49, B49, C50, D50, E50, F#50, G50, A50, B50, C51, D51, E51, F#51, G51, A51, B51, C52, D52, E52, F#52, G52, A52, B52, C53, D53, E53, F#53, G53, A53, B53, C54, D54, E54, F#54, G54, A54, B54, C55, D55, E55, F#55, G55, A55, B55, C56, D56, E56, F#56, G56, A56, B56, C57, D57, E57, F#57, G57, A57, B57, C58, D58, E58, F#58, G58, A58, B58, C59, D59, E59, F#59, G59, A59, B59, C60, D60, E60, F#60, G60, A60, B60, C61, D61, E61, F#61, G61, A61, B61, C62, D62, E62, F#62, G62, A62, B62, C63, D63, E63, F#63, G63, A63, B63, C64, D64, E64, F#64, G64, A64, B64, C65, D65, E65, F#65, G65, A65, B65, C66, D66, E66, F#66, G66, A66, B66, C67, D67, E67, F#67, G67, A67, B67, C68, D68, E68, F#68, G68, A68, B68, C69, D69, E69, F#69, G69, A69, B69, C70, D70, E70, F#70, G70, A70, B70, C71, D71, E71, F#71, G71, A71, B71, C72, D72, E72, F#72, G72, A72, B72, C73, D73, E73, F#73, G73, A73, B73, C74, D74, E74, F#74, G74, A74, B74, C75, D75, E75, F#75, G75, A75, B75, C76, D76, E76, F#76, G76, A76, B76, C77, D77, E77, F#77, G77, A77, B77, C78, D78, E78, F#78, G78, A78, B78, C79, D79, E79, F#79, G79, A79, B79, C80, D80, E80, F#80, G80, A80, B80, C81, D81, E81, F#81, G81, A81, B81, C82, D82, E82, F#82, G82, A82, B82, C83, D83, E83, F#83, G83, A83, B83, C84, D84, E84, F#84, G84, A84, B84, C85, D85, E85, F#85, G85, A85, B85, C86, D86, E86, F#86, G86, A86, B86, C87, D87, E87, F#87, G87, A87, B87, C88, D88, E88, F#88, G88, A88, B88, C89, D89, E89, F#89, G89, A89, B89, C90, D90, E90, F#90, G90, A90, B90, C91, D91, E91, F#91, G91, A91, B91, C92, D92, E92, F#92, G92, A92, B92, C93, D93, E93, F#93, G93, A93, B93, C94, D94, E94, F#94, G94, A94, B94, C95, D95, E95, F#95, G95, A95, B95, C96, D96, E96, F#96, G96, A96, B96, C97, D97, E97, F#97, G97, A97, B97, C98, D98, E98, F#98, G98, A98, B98, C99, D99, E99, F#99, G99, A99, B99, C100, D100, E100, F#100, G100, A100, B100, C101, D101, E101, F#101, G101, A101, B101, C102, D102, E102, F#102, G102, A102, B102, C103, D103, E103, F#103, G103, A103, B103, C104, D104, E104, F#104, G104, A104, B104, C105, D105, E105, F#105, G105, A105, B105, C106, D106, E106, F#106, G106, A106, B106, C107, D107, E107, F#107, G107, A107, B107, C108, D108, E108, F#108, G108, A108, B108, C109, D109, E109, F#109, G109, A109, B109, C110, D110, E110, F#110, G110, A110, B110, C111, D111, E111, F#111, G111, A111, B111, C112, D112, E112, F#112, G112, A112, B112, C113, D113, E113, F#113, G113, A113, B113, C114, D114, E114, F#114, G114, A114, B114, C115, D115, E115, F#115, G115, A115, B115, C116, D116, E116, F#116, G116, A116, B116, C117, D117, E117, F#117, G117, A117, B117, C118, D118, E118, F#118, G118, A118, B118, C119, D119, E119, F#119, G119, A119, B119, C120, D120, E120, F#120, G120, A120, B120, C121, D121, E121, F#121, G121, A121, B121, C122, D122, E122, F#122, G122, A122, B122, C123, D123, E123, F#123, G123, A123, B123, C124, D124, E124, F#124, G124, A124, B124, C125, D125, E125, F#125, G125, A125, B125, C126, D126, E126, F#126, G126, A126, B126, C127, D127, E127, F#127, G127, A127, B127, C128, D128, E128, F#128, G128, A128, B128, C129, D129, E129, F#129, G129, A129, B129, C130, D130, E130, F#130, G130, A130, B130, C131, D131, E131, F#131, G131, A131, B131, C132, D132, E132, F#132, G132, A132, B132, C133, D133, E133, F#133, G133, A133, B133, C134, D1

The bass line of 'The Rose Tree' is written on a single staff in G major (one sharp). It begins with a treble clef and a key signature of one sharp (F#). The melody consists of eighth and sixteenth notes, with a final measure in 2/4 time signature. The notation includes a repeat sign at the beginning and a double bar line at the end.

The musical score for 'The Rose Tree' is written for a single melodic line on a five-line staff. The key signature is one sharp (F#), and the time signature is 4/4. The melody begins with a treble clef and a key signature of one sharp. The first measure contains a quarter rest, followed by a series of eighth and sixteenth notes. The melody is characterized by a series of eighth and sixteenth notes, creating a lively, folk-like feel. The piece concludes with a final measure containing a quarter rest.

[illegible]

Scales 9-11

[illegible]

The bass line of 'The Rose Tree' is written on a single staff in bass clef. It begins with a key signature of three sharps (F#, C#, G#) and a common time signature (C). The melody consists of eighth and sixteenth notes, with a final measure in 2/4 time signature. The notation includes a repeat sign at the beginning and a double bar line at the end.

The bass line of 'The Rose Tree' is written in G major (one sharp) and 2/4 time. It begins with a repeat sign, followed by a series of eighth and sixteenth notes. The melody is: G2-A2-B2-C3-D3-E3-F#3-G3-A3-B3-C4-D4-E4-F#4-G4-A4-B4-C5-D5-E5-F#5-G5-A5-B5-C6-D6-E6-F#6-G6-A6-B6-C7-D7-E7-F#7-G7-A7-B7-C8-D8-E8-F#8-G8-A8-B8-C9-D9-E9-F#9-G9-A9-B9-C10-D10-E10-F#10-G10-A10-B10-C11-D11-E11-F#11-G11-A11-B11-C12-D12-E12-F#12-G12-A12-B12-C13-D13-E13-F#13-G13-A13-B13-C14-D14-E14-F#14-G14-A14-B14-C15-D15-E15-F#15-G15-A15-B15-C16-D16-E16-F#16-G16-A16-B16-C17-D17-E17-F#17-G17-A17-B17-C18-D18-E18-F#18-G18-A18-B18-C19-D19-E19-F#19-G19-A19-B19-C20-D20-E20-F#20-G20-A20-B20-C21-D21-E21-F#21-G21-A21-B21-C22-D22-E22-F#22-G22-A22-B22-C23-D23-E23-F#23-G23-A23-B23-C24-D24-E24-F#24-G24-A24-B24-C25-D25-E25-F#25-G25-A25-B25-C26-D26-E26-F#26-G26-A26-B26-C27-D27-E27-F#27-G27-A27-B27-C28-D28-E28-F#28-G28-A28-B28-C29-D29-E29-F#29-G29-A29-B29-C30-D30-E30-F#30-G30-A30-B30-C31-D31-E31-F#31-G31-A31-B31-C32-D32-E32-F#32-G32-A32-B32-C33-D33-E33-F#33-G33-A33-B33-C34-D34-E34-F#34-G34-A34-B34-C35-D35-E35-F#35-G35-A35-B35-C36-D36-E36-F#36-G36-A36-B36-C37-D37-E37-F#37-G37-A37-B37-C38-D38-E38-F#38-G38-A38-B38-C39-D39-E39-F#39-G39-A39-B39-C40-D40-E40-F#40-G40-A40-B40-C41-D41-E41-F#41-G41-A41-B41-C42-D42-E42-F#42-G42-A42-B42-C43-D43-E43-F#43-G43-A43-B43-C44-D44-E44-F#44-G44-A44-B44-C45-D45-E45-F#45-G45-A45-B45-C46-D46-E46-F#46-G46-A46-B46-C47-D47-E47-F#47-G47-A47-B47-C48-D48-E48-F#48-G48-A48-B48-C49-D49-E49-F#49-G49-A49-B49-C50-D50-E50-F#50-G50-A50-B50-C51-D51-E51-F#51-G51-A51-B51-C52-D52-E52-F#52-G52-A52-B52-C53-D53-E53-F#53-G53-A53-B53-C54-D54-E54-F#54-G54-A54-B54-C55-D55-E55-F#55-G55-A55-B55-C56-D56-E56-F#56-G56-A56-B56-C57-D57-E57-F#57-G57-A57-B57-C58-D58-E58-F#58-G58-A58-B58-C59-D59-E59-F#59-G59-A59-B59-C60-D60-E60-F#60-G60-A60-B60-C61-D61-E61-F#61-G61-A61-B61-C62-D62-E62-F#62-G62-A62-B62-C63-D63-E63-F#63-G63-A63-B63-C64-D64-E64-F#64-G64-A64-B64-C65-D65-E65-F#65-G65-A65-B65-C66-D66-E66-F#66-G66-A66-B66-C67-D67-E67-F#67-G67-A67-B67-C68-D68-E68-F#68-G68-A68-B68-C69-D69-E69-F#69-G69-A69-B69-C70-D70-E70-F#70-G70-A70-B70-C71-D71-E71-F#71-G71-A71-B71-C72-D72-E72-F#72-G72-A72-B72-C73-D73-E73-F#73-G73-A73-B73-C74-D74-E74-F#74-G74-A74-B74-C75-D75-E75-F#75-G75-A75-B75-C76-D76-E76-F#76-G76-A76-B76-C77-D77-E77-F#77-G77-A77-B77-C78-D78-E78-F#78-G78-A78-B78-C79-D79-E79-F#79-G79-A79-B79-C80-D80-E80-F#80-G80-A80-B80-C81-D81-E81-F#81-G81-A81-B81-C82-D82-E82-F#82-G82-A82-B82-C83-D83-E83-F#83-G83-A83-B83-C84-D84-E84-F#84-G84-A84-B84-C85-D85-E85-F#85-G85-A85-B85-C86-D86-E86-F#86-G86-A86-B86-C87-D87-E87-F#87-G87-A87-B87-C88-D88-E88-F#88-G88-A88-B88-C89-D89-E89-F#89-G89-A89-B89-C90-D90-E90-F#90-G90-A90-B90-C91-D91-E91-F#91-G91-A91-B91-C92-D92-E92-F#92-G92-A92-B92-C93-D93-E93-F#93-G93-A93-B93-C94-D94-E94-F#94-G94-A94-B94-C95-D95-E95-F#95-G95-A95-B95-C96-D96-E96-F#96-G96-A96-B96-C97-D97-E97-F#97-G97-A97-B97-C98-D98-E98-F#98-G98-A98-B98-C99-D99-E99-F#99-G99-A99-B99-C100-D100-E100-F#100-G100-A100-B100-C101-D101-E101-F#101-G101-A101-B101-C102-D102-E102-F#102-G102-A102-B102-C103-D103-E103-F#103-G103-A103-B103-C104-D104-E104-F#104-G104-A104-B104-C105-D105-E105-F#105-G105-A105-B105-C106-D106-E106-F#106-G106-A106-B106-C107-D107-E107-F#107-G107-A107-B107-C108-D108-E108-F#108-G108-A108-B108-C109-D109-E109-F#109-G109-A109-B109-C110-D110-E110-F#110-G110-A110-B110-C111-D111-E111-F#111-G111-A111-B111-C112-D112-E112-F#112-G112-A112-B112-C113-D113-E113-F#113-G113-A113-B113-C114-D114-E114-F#114-G114-A114-B114-C115-D115-E115-F#115-G115-A115-B115-C116-D116-E116-F#116-G116-A116-B116-C117-D117-E117-F#117-G117-A117-B117-C118-D118-E118-F#118-G118-A118-B118-C119-D119-E119-F#119-G119-A119-B119-C120-D120-E120-F#120-G120-A120-B120-C121-D121-E121-F#121-G121-A121-B121-C122-D122-E122-F#122-G122-A122-B122-C123-D123-E123-F#123-G123-A123-B123-C124-D124-E124-F#124-G124-A124-B124-C125-D125-E125-F#125-G125-A125-B125-C126-D126-E126-F#126-G126-A126-B126-C127-D127-E127-F#127-G127-A127-B127-C128-D128-E128-F#128-G128-A128-B128-C129-D129-E129-F#129-G129-A129-B129-C130-D130-E130-F#130-G130-A130-B130-C131-D131-E131-F#131-G131-A131-B131-C132-D132-E132-F#132-G132-A132-B132-C133-D133-E133-F#133-G133-A133-B133-C134-D134-E134-F#134-G134-A134-B134-C135-D135-E135-F#135-G135-A135-B135-C136-D136-E136-F#136-G136-A136-B136-C137-D137-E137-F#137-G137-A137-B137-C138-D138-E138-F#138-G138-A138-B138-C139-D139-E139-F#139-G139-A139-B139-C140-D140-E140-F#140-G140-A140-B140-C141-D141-E141-F#141-G141-A141-B141-C142-D142-E142-F#142-G142-A142-B142-C143-D143-E143-F#143-G143-A143-B143-C144-D144-E144-F#144-G144-A144-B144-C145-D145-E145-F#145-G145-A145-B145-C146-D146-E146-F#146-G146-A146-B146-C147-D147-E147-F#147-G147-A147-B147-C148-D148-E148-F#148-G148-A148-B148-C149-D149-E149-F#149-G149-A149-B149-C150-D150-E150-F#150-G150-A150-B150-C151-D151-E151-F#151-G151-A151-B151-C152-D152-E152-F#152-G152-A152-B152-C153-D153-E153-F#153-G153-A153-B153-C154-D154-E154-F#154-G154-A154-B154-C155-D155-E155-F#155-G155-A155-B155-C156-D156-E156-F#156-G156-A156-B156-C157-D157-E157-F#157-G157-A157-B157-C158-D158-E158-F#158-G158-A158-B158-C159-D159-E159-F#159-G159-A159-B159-C160-D160-E160-F#160-G160-A160-B160-C161-D161-E161-F#161-G161-A161-B161-C162-D162-E162-F#162-G162-A162-B162-C163-D163-E163-F#163-G163-A163-B163-C164-D164-E164-F#164-G164-A164-B164-C165-D165-E165-F#165-G165-A165-B165-C166-D166-E166-F#166-G166-A16

The bass line for 'The Rose Tree' is written on a single staff in bass clef with a key signature of two sharps (F# and C#). The melody consists of eighth and sixteenth notes, with a repeat sign and a first ending bracket. The first ending leads back to the beginning of the phrase.

The bass line of 'The Rose Tree' is written in G major (one sharp) and 2/4 time. It begins with a whole rest, followed by a series of eighth and sixteenth notes, and ends with a whole rest. The melody is simple and catchy, typical of a children's song.

Concert Gb

Tuba 8



Scale Pattern A



Scale Pattern B



Scale Pattern C



Scale in 3rds

Intervals



Arpeggio



Concert B



Scale Pattern A



Scale Pattern B



Scale Pattern C



Scale in 3rds

Intervals



Arpeggio

